

CBISA Benchmarking™ Report
Based on Fiscal Year 2010 CBISA Information

Date Prepared: September 1, 2011
Prepared For: Sample Hospital, Any City, Any State

CBISA Benchmarking™

Lyon Software



Selected Peer Group and Community Benefit Performance Measure

Selected Performance Measure: Charity Care

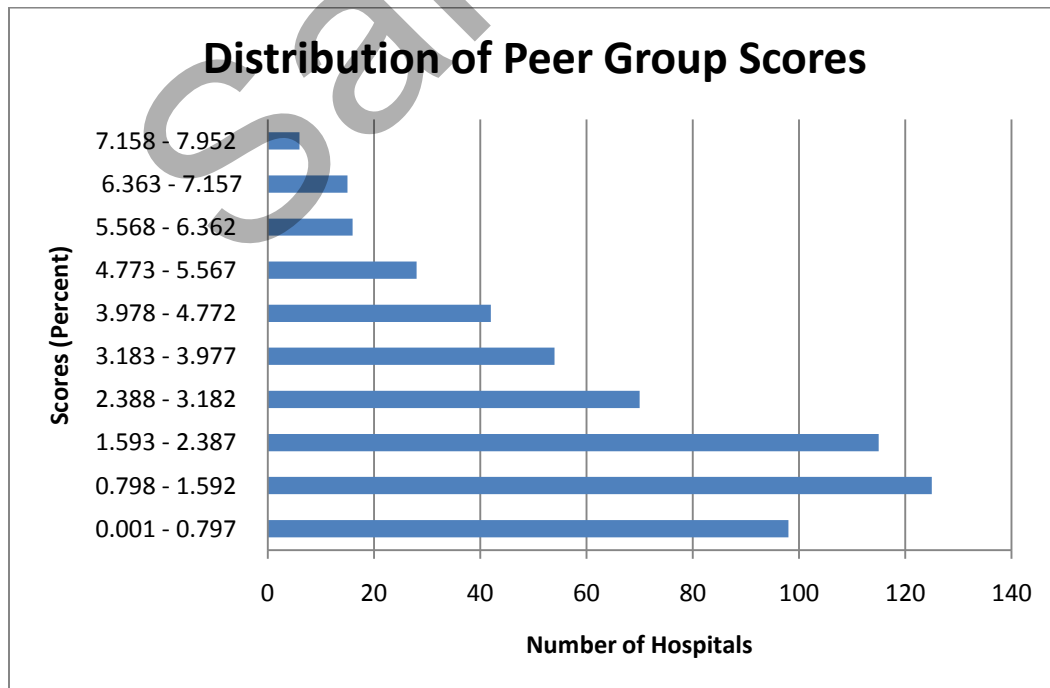
Selected Peer Group - CBISA Hospitals meeting these characteristics:

All CBISA Hospitals

Peer Group Number of Hospitals: 569

Peer Group Scores

Scores are shown in deciles and are based on percent of hospitals' total expenses



CBISA Benchmarking™ Report
Based on Fiscal Year 2010 CBISA Information

Date Prepared: September 1, 2011
Prepared For: Sample Hospital, Any City, Any State

Your Hospital's Performance
Relative to the Selected Peer Group

Your Score: 3.012

Peer Group Statistics and Scores:

Number of hospitals	569
Lowest score	0.001
Highest score	7.952
Average (mean) score	2.409
Median* score	1.94

Percentile Note: Your performance ranks in the 69th percentile, i.e. your hospital scored higher than 68 percent of the hospitals in the selected peer group.

*Half of the hospitals in the peer group scored higher and half scored lower than this median.